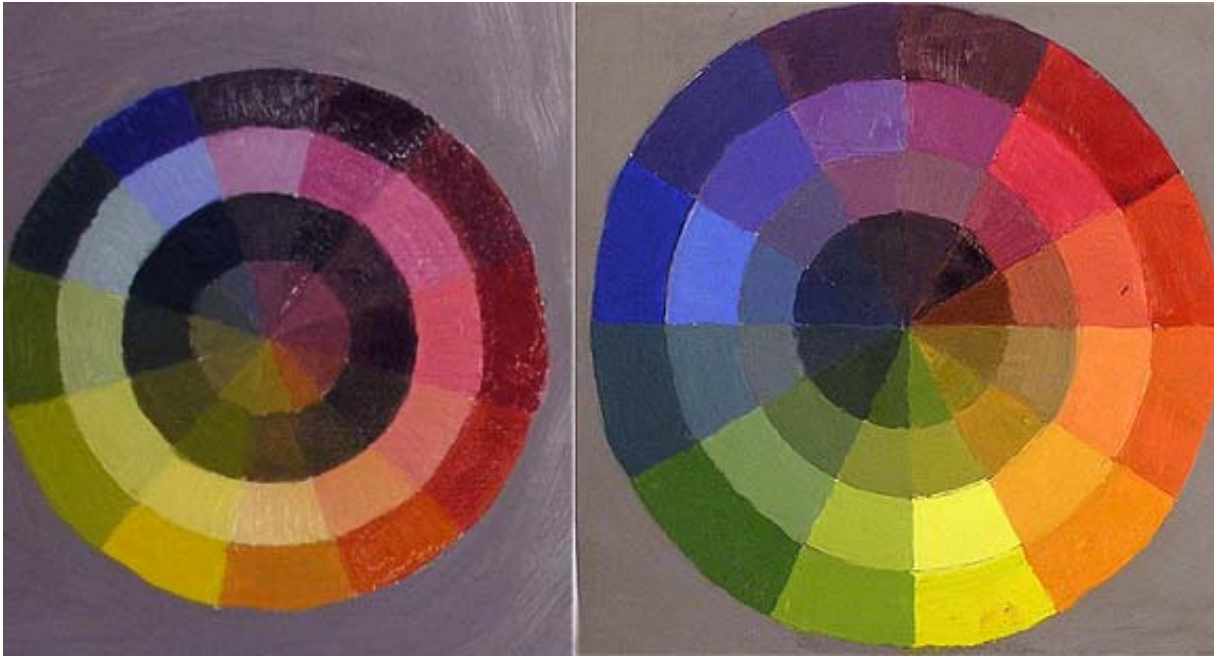


Color Wheel



Primary colors – Red (Winsor red or Cad.Red), Yellow (Winsor yellow or Cad.Yellow), Blue (French Ultramarine Blue)
Secondary colors – Orange, Green, Violet
Tertiary colors – R.O. - Y.O. – Y.G. – B.G. – B.V. – R.V.

Project: Draw 4 concentric circles with 12 evenly measured segments. Each of the circles will have a separate purpose and color effect. You can decide which row you wish to paint the **hues**, **tones**, **tints** and **shades**. However, try to paint each square within the shade, tint, and tone rows the same value so that you see the color contrast inside that particular row and not a value contrast. (The tint row on the left piece illustrates this well) The outside of the color wheel is painted grey that is made from the primary colors plus white. You can also use this grey to make your tones.

You will notice that pure color has value (lightness or darkness) and some pigments are stronger than others and dominate while mixing. This is a good exercise in mixing and helps students to see color relationships.

Hue – Pure color

Tint – Color plus white

Shade – Color plus black

Tone – Color plus grey (mix the primary colors plus white to make the grey)

Complimentary colors On a standard color wheel they are the colors opposite each other (red/green, yellow/blue). They look good together and compliment each other. When mixed they produce a shade of grey (including white).

Intensity: The brightness or dullness of a hue.

Saturation: The degree of purity of a hue.

Warm/cool colors: Warm colors are said to advance or appear more active in a painting, while cool colors recede and often appear more calming.

Extra color stuff:



FIGURE 1

FIGURE 2

FIGURE 3

The Color Wheel

One useful tool is a color wheel, which shows how colors are related to each other. It consists of the three primary colors—red, yellow, and blue—and mixtures of them. A simple way of choosing color combinations is to use the color wheel and the following guidelines:

- Colors that are opposite each other on the color wheel (called “complementary” colors) set up a vibration that dazzles and confuses the eye (Figure 1). Don’t use them next to each other unless you specifically want this effect.
- Colors that are adjacent on the color wheel are related (Figure 2). When you put them next to each other, the effect is pleasing.
- Contrasting colors—those separated by two or three colors on the wheel—create a bold, vivid effect (Figure 3).

Simultaneous contrast — When complementary colors are immediately adjacent to one another, they visually influence each other and their saturation levels appear dramatically intensified.

Contrast of extension - When one color is extended over a large area contrasting another color extended over a very small area.

Warm/Cold contrast - Warm colors are said to advance or appear more active in a painting, while cool colors recede and often appear more calming.



Simultaneous contrast - *Night Cafe in Arles*



Warm/cold contrast - Guatam Rao



Contrast of extension – Monet, *Sunrise*